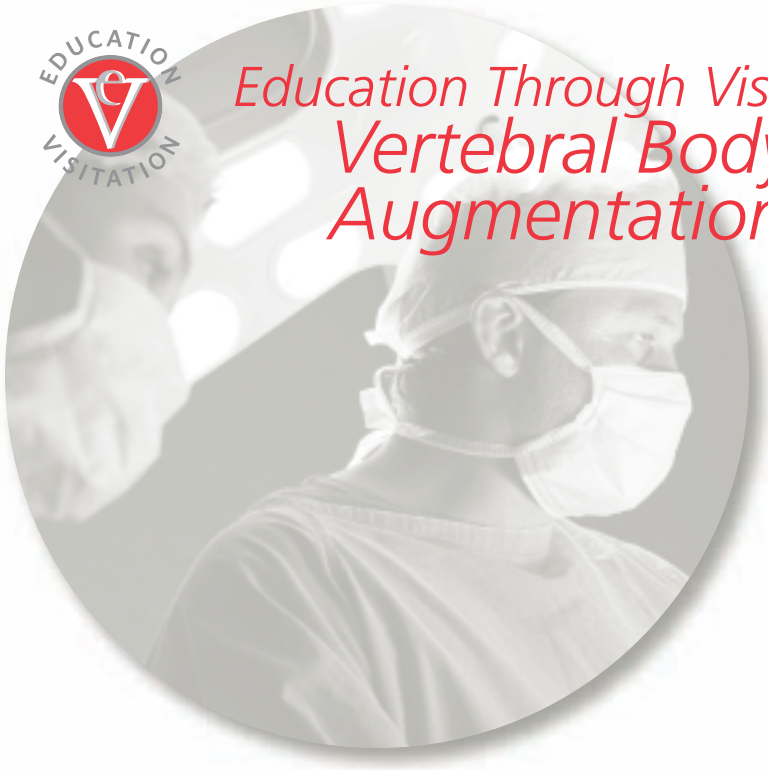




Education Through Visitation Vertebral Body Augmentation Visitation



Surgeon Visitations are designed to provide the opportunity to meet experienced surgeons in either a one-on-one setting or in a small group setting. Participants observe live surgery and discuss surgical technique, indications and clinical results. Program agendas are customized to suit the participant's surgical area of interest.

For more information on these and other Medical Education programs, please contact DePuy Spine Medical Education at 1-800-741-8075 or by email at medicaleducation@dpyus.jnj.com

never stop moving™



Max Lee, MD
Neurosurgeon



Max Lee, MD



VISITATION:
Cervical
VBA

PRACTICE LOCATION:
Milwaukee Neurological Institute
Milwaukee, Wisconsin

HOSPITAL AFFILIATION:
Aurora/St. Luke's
Milwaukee, Wisconsin
Columbia/St. Mary's Hospital
Milwaukee, Wisconsin

CLINICAL INTERESTS:

Biologics	MIS
Deformity, Adult	Motion
Degenerative, Adult	Trauma/Tumor

RESEARCH INTERESTS:
Disc Degeneration
Fusion Techniques
Minimally Invasive Surgery
Motion Preservation

DEPUY SPINE PRODUCTS USED:
BENGAL® System; CHARITÉ® Artificial Disc; CONCORDE™ Bullet System; COUGAR® System;
EAGLE™ Plus ACP System; EXPEDIUM® Spine System; MOUNTAINEER® Spine System;
PIPELINE™ Access System; SABER® LUMBAR I/F CAGE® System; SKYLINE® ACP System;
SLIM-LOC® ACP System; UNIPLATE® ACP System; VIPER™2 System

OPERATING ROOM DAYS:
Tuesday, Wednesday, Thursday, and Friday

RECOMMENDED HOUSING (based on proximity to hospital):

At Aurora/St. Luke's:	At Columbia/St. Mary's Hospital:
Hilton Milwaukee City Center	Hyatt Regency Milwaukee
509 W. Wisconsin Avenue	333 W. Kilbourn Avenue
Milwaukee, WI	Milwaukee, WI
TEL: 1-414-271-7250	TEL: 1-414-276-1234

RECOMMENDED AIRPORT:
General Mitchell International Airport (MKE)

For more information on these and other Medical Education programs,
please contact DePuy Spine Medical Education at 1-800-741-8075 or by
email at medicaleducation@dpyus.jnj.com

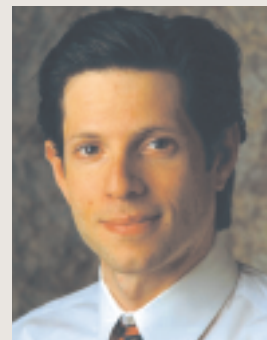


never stop moving™

DePuy Spine, Inc.
325 Paramount Drive
Raynham, MA 02767
USA
Tel: 1-800-741-8075

www.depuy spine.com

Steven C. Ludwig, MD
Orthopaedic Surgeon



Steven C. Ludwig, MD



VISITATION:
Cervical
MIS
VBA

PRACTICE LOCATION:

University of Maryland Spine Center
Baltimore, Maryland

HOSPITAL AFFILIATION:

University of Maryland Medical Center
Baltimore, Maryland

CLINICAL INTERESTS:

Degenerative Diseases of the Cervical and Lumbar Spine
Minimally Invasive Surgery
Spinal Tumors and Infections
Sports-Related Spine Injuries
Traumatic Injuries to the Cervical Spine

RESEARCH INTERESTS:

Fusion Techniques

DEPUY SPINE PRODUCTS USED:

BENGAL® Stackable Cage System; CONCORDE™ Bullet System;
CONFIDENCE SPINAL CEMENT SYSTEM™; COUGAR® System; EXPEDIUM® Spine System;
MOUNTAINEER® Spine System; PIPELINE™ Access System; SKYLINE® ACP System;
SPOTLIGHT™ Access System; VIPER™2 System

OPERATING ROOM DAYS:

Monday, Wednesday and every other Friday

RECOMMENDED HOUSING (based on proximity to hospital):

Hilton Hotel Baltimore
401 West Pratt Street
Baltimore, MD
TEL: 1-443-573-8700

RECOMMENDED AIRPORT:

Baltimore-Washington International Airport (BWI)

For more information on these and other Medical Education programs, please contact DePuy Spine Medical Education at 1-800-741-8075 or by email at medicaleducation@dpyus.jnj.com



never stop moving™

DePuy Spine, Inc.
325 Paramount Drive
Raynham, MA 02767
USA
Tel: 1-800-741-8075

www.depuy spine.com

Kornelis A. Poelstra, MD, PhD
Orthopaedic Surgeon



Kornelis A. Poelstra, MD, PhD



VISITATION:
Cervical
MIS
VBA

PRACTICE LOCATION:
University of Maryland Shock Trauma
Baltimore, Maryland

HOSPITAL AFFILIATION:
University of Maryland Shock Trauma
Baltimore, Maryland

CLINICAL INTERESTS:

Biologics	Motion
Cervical	Trauma/Tumor
Degenerative, Adult	Damage Control Spine Surgery
MIS	via MIS in Trauma Victims

RESEARCH INTERESTS:
Minimally Invasive Surgery
Fusion Techniques
Prevention of Post-operative (implant-associated) Infections
Spinal Cord Injuries

DEPUY SPINE PRODUCTS USED:
CHARITÉ® Artificial Disc; CONCORDE™ Bullet System; COUGAR® System;
EXPEDIUM® Spine System; MOUNTAINEER® Spine System; PIPELINE™ Access System;
SKYLINE® ACP System; SPOTLIGHT™ Access System; VIPER™2 System

OPERATING ROOM DAYS:
Every Wednesday; 2nd and 4th Thursdays; 1st and 4th Fridays

RECOMMENDED HOUSING (based on proximity to hospital):
Hilton Hotel Baltimore
401 West Pratt Street
Baltimore, MD
TEL: 1-443-573-8700

RECOMMENDED AIRPORT:
Baltimore-Washington International Airport (BWI)

For more information on these and other Medical Education programs, please contact DePuy Spine Medical Education at 1-800-741-8075 or by email at medicaleducation@dpyus.jnj.com



never stop moving™

DePuy Spine, Inc.
325 Paramount Drive
Raynham, MA 02767
USA
Tel: 1-800-741-8075

www.depuy spine.com